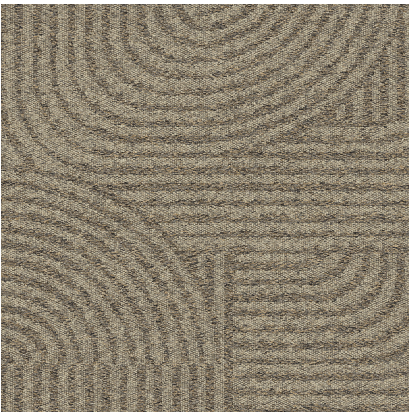


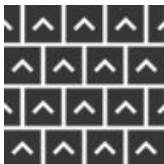
9405-001-000 Alba



Installation Methods



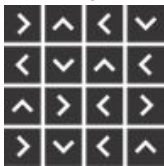
Ashlar



Brick



Monolithic



Non Directional

All product specifications reflect averages derived from product sample testing, are subject to normal manufacturing and testing tolerances and inherent pattern variances, and may be changed without notice. For more information about these and other important attributes of the product(s) described herein, including recycled content and product warranty information, please see www.interface.com.cn/page/disclaimer

Product Step this Way Colour Alba Collection Look Both Ways

Product Number 9405

Product Specifications

Product Construction	Tufted Textured Tip Sheared Loop
Yarn System	100% Solution Dyed Nylon
Dye Method	100% Solution Dyed
Soil/Stain Protection	Protekt²
Preservative Protection	Intersept [®]

More Product Specifications

Machine Gauge	Tapestry
Stitches	39.4/10cm 10/in
Pile Thickness	2.1mm ±0.5mm
Total Thickness	6.5mm ±0.5mm
Backing Structure	GlasBac [™]

Performance Specifications

Area of Use	Commercial Heavy Use
Stability - Delaminating	ASTM D3936 ≥ 3.0 lbs/in GB/T 26843 ≥ 26 N
Stability - Dimensional Stability	ISO 2551 ≤ ± 0.1% QB/T 2755 ≤ 0.1%
Stability - Tuft Bind	QB/T 1090 ≥ 24 N (QB/T 2755) ISO 4919 > 30 N
Wear - Castor Chair	QB/T 2755 ≤ 0.15% EN 985 > 2.4 Rating @25,000 cycles
Wear - Vetterman Drum	GB/T 26844 ≥ 3.0 at 22000 cycles ISO 10361(ASTM D5417) ≥ 3.5 Rating @20,000 cycles
Colour Fastness to Light	GB/T 8427 ≥ 4-5 AATCC 16 Part 3 ≥ 4 @ 60 Hours
Colour Fastness to Rubbing and Crocking	GB/T 3920 ≥ 4-5 AATCC 165 ≥ 4 (Wet & Dry)
Colour Fastness to Water	AATCC 107 ≥ 4 GB/T 5713 ≥ 4-5
Flammability - Methenamine Pill	GB/T 11049 ≤ 25.4 mm ASTM 2859 - 7 of 8 passing
Flammability - Radiant Panel	GB/T 11785 B1 CHF ≥ 4.5 kW/m ² (GB 8624) ASTM E648 > .45 watts/sq. cm
Flammability - Smoke Density	ASTM E662 < 450 GB/T 11785 s1 ≤ 750 %.min (GB 8624)
Antistatic	AATCC 134 < 3.0 kV GB/T 18044 ≤ 2.0 kV

Lifetime Antimicrobial	AATCC 174 Parts II & III 99% reduction/No mold 7 Days ASTM E2471 Complete Inhibition
------------------------	---

Generic Tests

Acoustic – Nylon	Absorption Coefficient - NRC 0.0 - 0.2
Dynamic Loading	ISO 2094 < 15% Thickness loss QB/T 1091 < 15% Thickness loss
Static Loading	ISO 3415 < 15% Thickness loss QB/T 1092 < 15% Thickness loss
Green Carpet (VOC)	ASTM D5116 Accredited ISO 10580 Accredited
Thermal Resistance	ASTM C518 R Value \geq 0.5

Environmental Specifications

Recycled Content %	60%
Pre-Consumer (Total)	58%
Post-Consumer (Total)	3%
Other Environmental Claims	View Environmental Accreditations
Ingredients and Life Cycle Impacts	Environmental Product Declaration - GlasBac™
End of Life	Carpet to Carpet Recycling
Embodied Carbon (Cradle to Gate)	6.44 kg CO ₂ eq./m ²

Technical Information

Installation	View recommended Interface Installation Guidelines online
Maintenance	View recommended Interface Maintenance Guidelines online
Reclamation	View details on our ReEntry™ Program
Warranty	15 Year Standard Warranty
Manufacturing Location	ISO9001&14001&45001 Certified Plant in Taicang, China