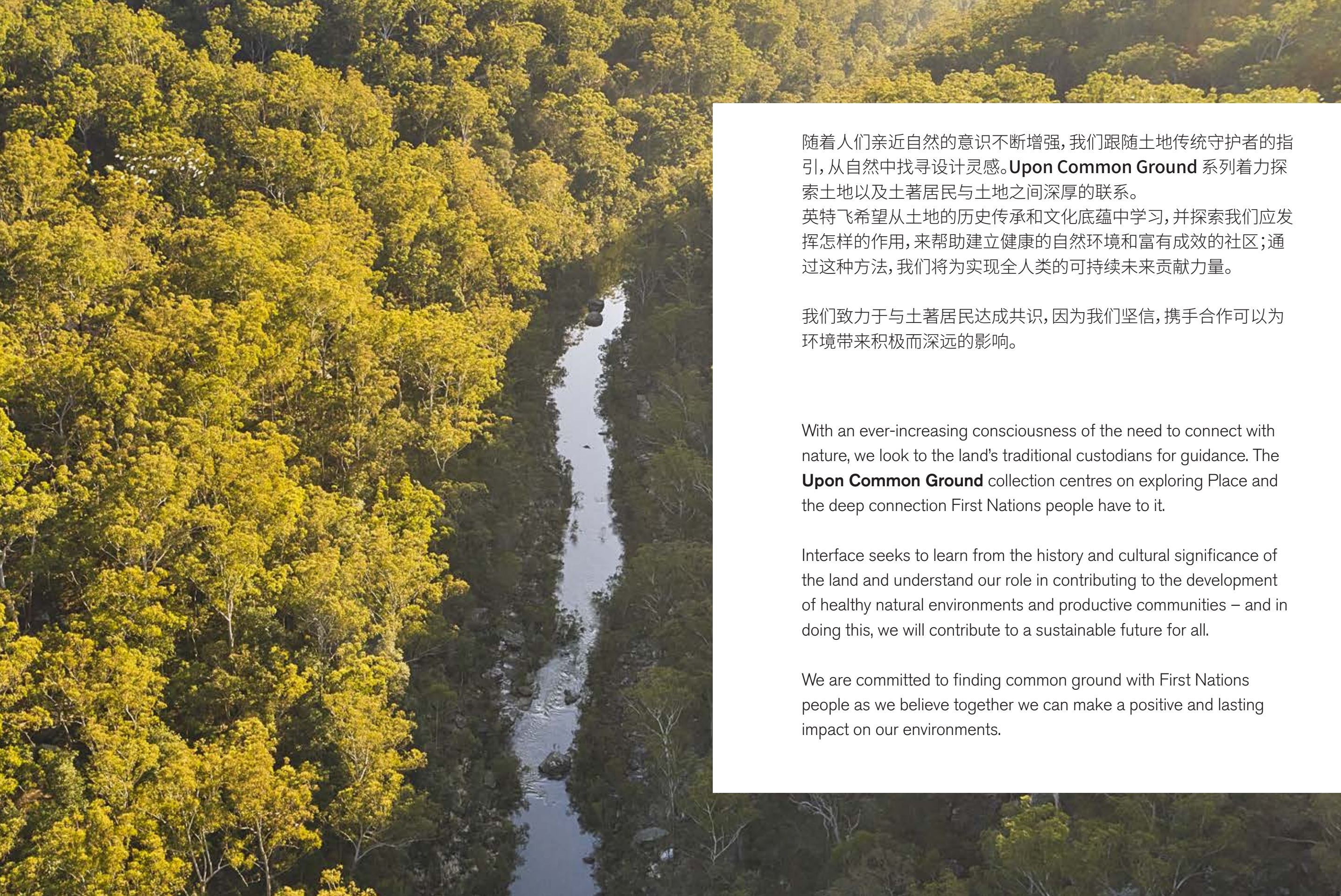


An aerial photograph of a river winding through a lush, green forest. The river is surrounded by dense trees and vegetation. In the background, a layer of mist or fog hangs over the forest, creating a serene and atmospheric scene. The lighting suggests it might be early morning or late afternoon, with soft light filtering through the trees.

Upon Common Ground

Dry Bark
Escarpment
Sandbank
Shallows
Undulating Water

Interface®



随着人们亲近自然的意识不断增强,我们跟随土地传统守护者的指引,从自然中找寻设计灵感。**Upon Common Ground** 系列着力探索土地以及土著居民与土地之间深厚的联系。英特飞希望从土地的历史传承和文化底蕴中学习,并探索我们应发挥怎样的作用,来帮助建立健康的自然环境和富有成效的社区;通过这种方法,我们将为实现全人类的可持续未来贡献力量。

我们致力于与土著居民达成共识,因为我们坚信,携手合作可以为环境带来积极而深远的影响。

With an ever-increasing consciousness of the need to connect with nature, we look to the land's traditional custodians for guidance. The **Upon Common Ground** collection centres on exploring Place and the deep connection First Nations people have to it.

Interface seeks to learn from the history and cultural significance of the land and understand our role in contributing to the development of healthy natural environments and productive communities – and in doing this, we will contribute to a sustainable future for all.

We are committed to finding common ground with First Nations people as we believe together we can make a positive and lasting impact on our environments.

贴近自然乡野
Upon Common Ground 系列包含 5 款源于自然生态灵感的模块地毯产品, 尽显大地的自然之美。

Sandbank, Shallows 及 **Undulating Water.** 系列产品从水道和纹理感沙滩中汲取灵感。**Dry Bark** 系列产品展现出风化的树皮质感。**Escarpment** 系列产品则彰显出石崖峭壁之美。

产品色系代表澳大利亚的五大主要地区, 并采用 100% 回收原液染色纱线制成, 可实现全生命周期碳中和。

A Connection to Country

Upon Common Ground is a collection of 5 biophilic-inspired carpet tile designs that capture the earth's natural beauty.

Waterways and textured sands inspire Sandbank, Shallows, and Undulating Water. Dry Bark showcases weathered tree bark. And, Escarpment captures the beauty of stone cliffs.

The colour range represents five key regions of Australia and is made with 100% recycled solution-dyed nylon with a carbon-neutral lifecycle.

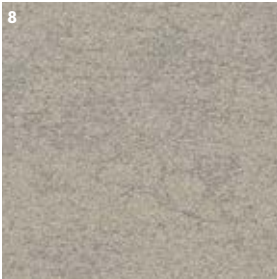
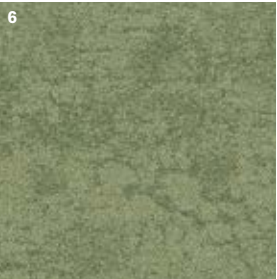
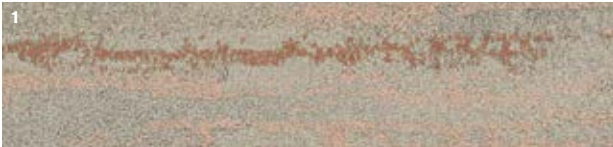


PRODUCT /产品 UNDULATING WATER COLOUR /颜色 SPINIFEX INSTALLED /安装 ASHLAR 上下错拼
PRODUCT /产品 SHALLOWS COLOUR /颜色 SPINIFEX INSTALLED ASHLAR 上下错拼
PRODUCT /产品 SANDBANK COLOUR /颜色 SPINIFEX INSTALLED ASHLAR 上下错拼
PRODUCT /产品 DRY BARK COLOUR /颜色 SPINIFEX NEUTRAL INSTALLED ASHLAR 上下错拼



Desert Palette 调色盘

- 1. **UNDULATING WATER** 2526001 DESERT
- 2. **SHALLOWS** 2527001 DESERT
- 3. **SANDBANK** 2528001 DESERT
- 4. **DRY BARK** 2529001 DESERT NEUTRAL
- 5. **DRY BARK** 2529002 DESERT SANDS
- 6. **ESCARPMENT** 2525001 DESERT SHRUB
- 7. **ESCARPMENT** 2525002 DESERT SANDS
- 8. **ESCARPMENT** 2525003 DESERT NEUTRAL





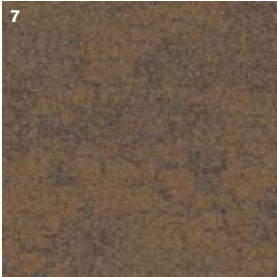
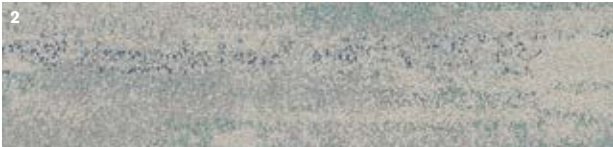
PRODUCT / 产品 ESCARPMENT COLOUR / 颜色 DESERT SANDS INSTALLED / 安装 ASHLAR 上下错拼
PRODUCT / 产品 DRY BARK COLOUR / 颜色 DESERT SANDS INSTALLED / 安装 ASHLAR 上下错拼



PRODUCT / 产品 UNDULATING WATER **COLOUR / 颜色** DESERT **INSTALLED / 安装** ASHLAR 上下错拼
PRODUCT / 产品 SHALLOWS **COLOUR / 颜色** DESERT **INSTALLED / 安装** ASHLAR 上下错拼
PRODUCT / 产品 SANDBANK **COLOUR / 颜色** DESERT **INSTALLED / 安装** ASHLAR 上下错拼
PRODUCT / 产品 ESCARPMENT **COLOUR / 颜色** DESERT SHRUB **INSTALLED / 安装** ASHLAR 上下错拼

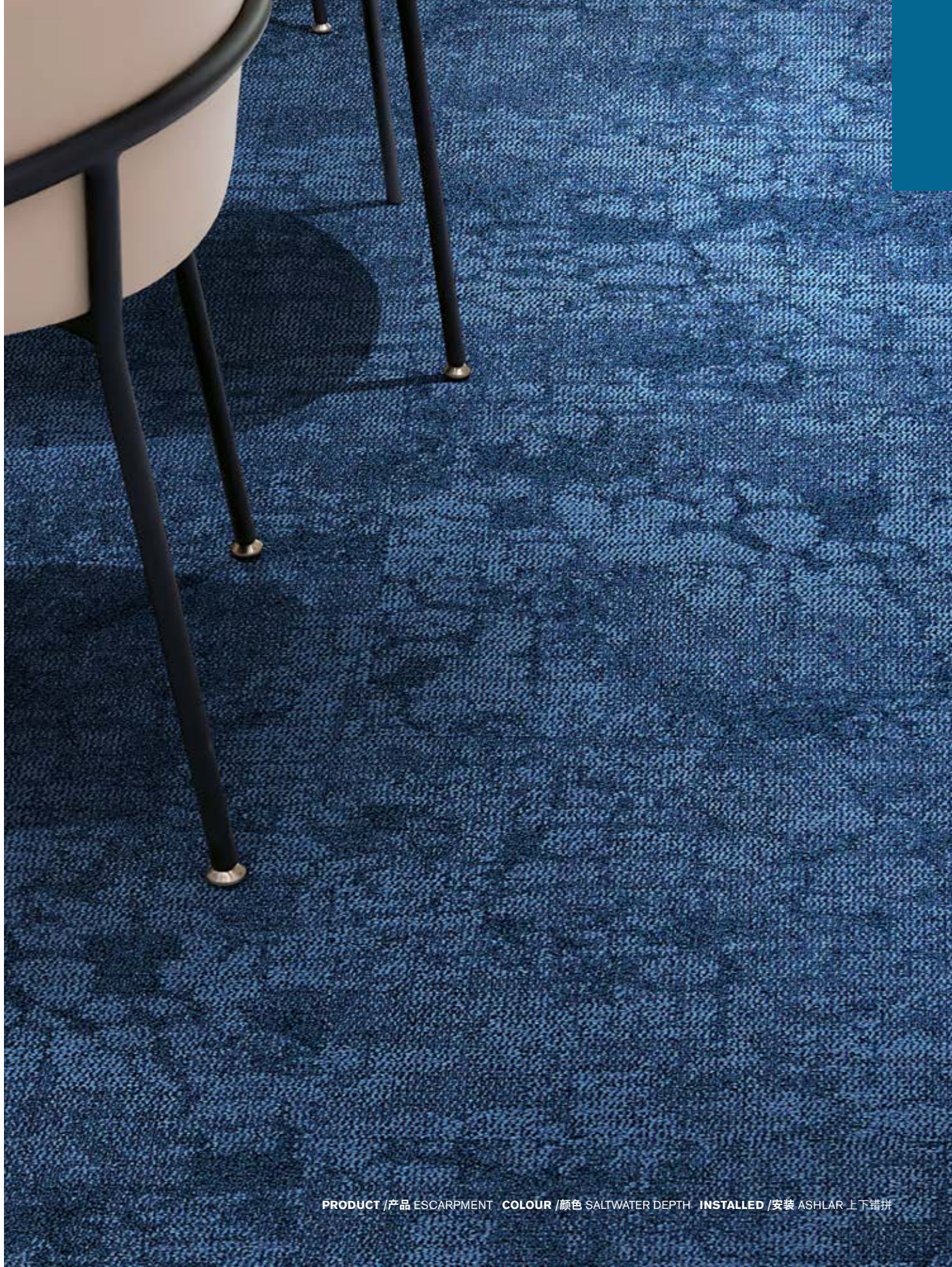
Saltwater Palette 调色盘

- 1. **UNDULATING WATER** 2526002 SALTWATER
- 2. **SHALLOWS** 2527002 SALTWATER
- 3. **SANDBANK** 2528002 SALTWATER
- 4. **DRY BARK** 2529003 SALTWATER NEUTRAL
- 5. **DRY BARK** 2529004 SALTWATER DEPTH
- 6. **ESCARPMENT** 2525004 SALTWATER DEPTH
- 7. **ESCARPMENT** 2525005 SALTWATER CLIFF
- 8. **ESCARPMENT** 2525006 SALTWATER NEUTRAL





PRODUCT / 产品 UNDULATING WATER COLOUR / 颜色 SALTWATER INSTALLED / 安装 ASHLAR 上下错拼
PRODUCT / 产品 SHALLOWS COLOUR / 颜色 SALTWATER INSTALLED / 安装 ASHLAR 上下错拼
PRODUCT / 产品 SANDBANK COLOUR / 颜色 SALTWATER INSTALLED / 安装 ASHLAR 上下错拼
PRODUCT / 产品 DRY BARK COLOUR / 颜色 SALTWATER DEPTH INSTALLED / 安装 ASHLAR 上下错拼
PRODUCT / 产品 ESCARPMENT COLOUR / 颜色 SALTWATER NEUTRAL INSTALLED / 安装 ASHLAR 上下错拼



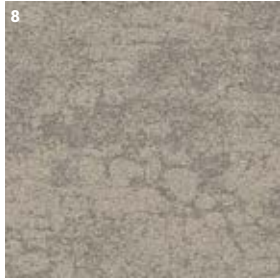
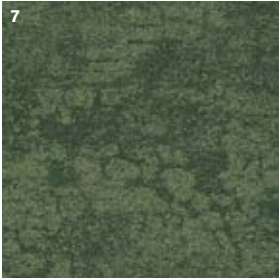
PRODUCT / 产品 ESCARPMENT COLOUR / 颜色 SALTWATER DEPTH INSTALLED / 安装 ASHLAR 上下错拼



PRODUCT / 产品 UNDULATING WATER COLOUR / 颜色 SALTWATER INSTALLED / 安装 ASHLAR 上下铺拼
PRODUCT / 产品 SHALLOWS COLOUR / 颜色 SALTWATER INSTALLED / 安装 ASHLAR 上下错拼

Rainforest Palette 调色盘

- 1. **UNDULATING WATER** 2526003 RAINFOREST
- 2. **SHALLOWS** 2527003 RAINFOREST
- 3. **SANDBANK** 2528003 RAINFOREST
- 4. **DRY BARK** 2529005 RAINFOREST NEUTRAL
- 5. **DRY BARK** 2529006 RAINFOREST CANOPY
- 6. **ESCARPMENT** 2525007 RAINFOREST FLOOR
- 7. **ESCARPMENT** 2525008 RAINFOREST CANOPY
- 8. **ESCARPMENT** 2525009 RAINFOREST NEUTRAL



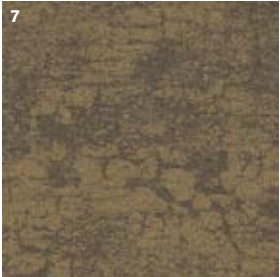
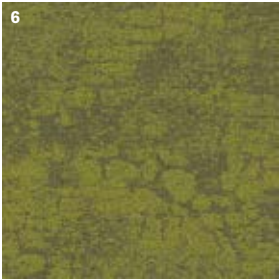
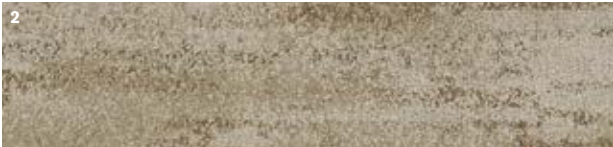
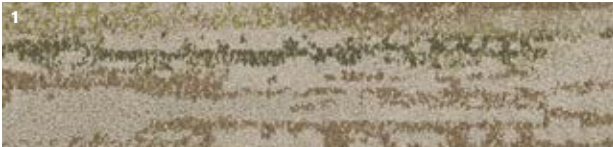




PRODUCT / 产品 SHALLOWS COLOUR / 颜色 RAINFOREST INSTALLED / 安装 ASHLAR 上下错拼
PRODUCT / 产品 ESCARPMENT COLOUR / 颜色 RAINFOREST CANOPY INSTALLED / 安装 ASHLAR 上下错拼

Freshwater Palette 调色盘

- 1. **UNDULATING WATER** 2526004 FRESHWATER
- 2. **SHALLOWS** 2527004 FRESHWATER
- 3. **SANDBANK** 2528004 FRESHWATER
- 4. **DRY BARK** 2529007 FRESHWATER NEUTRAL
- 5. **DRY BARK** 2529008 FRESHWATER GORGE
- 6. **ESCARPMENT** 2525010 FRESHWATER LOMANDRA
- 7. **ESCARPMENT** 2525011 FRESHWATER GORGE
- 8. **ESCARPMENT** 2525012 FRESHWATER NEUTRAL



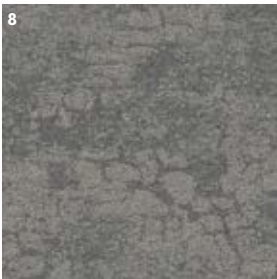
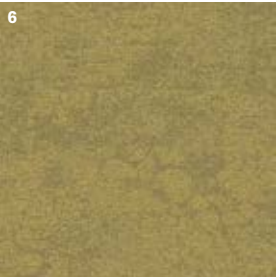


PRODUCT / 产品 UNDULATING WATER COLOUR / 颜色 FRESHWATER INSTALLED / 安装 ASHLAR 上下错拼
PRODUCT / 产品 SHALLOWS COLOUR / 颜色 FRESHWATER INSTALLED / 安装 ASHLAR 上下错拼
PRODUCT / 产品 SANDBANK COLOUR / 颜色 FRESHWATER INSTALLED / 安装 ASHLAR 上下错拼



Spinifex Palette 调色盘

- 1. **UNDULATING WATER** 2526005 SPINIFEX
- 2. **SHALLOWS** 2527005 SPINIFEX
- 3. **SANDBANK** 2528005 SPINIFEX
- 4. **DRY BARK** 2529009 SPINIFEX NEUTRAL
- 5. **DRY BARK** 2529010 SPINIFEX GRASS
- 6. **ESCARPMENT** 2525013 SPINIFEX GRASS
- 7. **ESCARPMENT** 2525014 SPINIFEX DIRT
- 8. **ESCARPMENT** 2525015 SPINIFEX NEUTRAL





PRODUCT / 产品 UNULATING WATER COLOUR / 颜色 SPINIFEX INSTALLED / 安装 ASHLAR 上下错拼
PRODUCT / 产品 ESCARPMENT COLOUR / 颜色 SPINIFEX NEUTRAL INSTALLED / 安装 ASHLAR 上下错拼



PRODUCT / 产品 ESCARPMENT COLOUR / 颜色 SPINIFEX GRASS INSTALLED / 安装 ASHLAR 上下错拼
PRODUCT / 产品 UNDULATING WATER COLOUR / 颜色 SPINIFEX INSTALLED / 安装 ASHLAR 上下错拼



CARPET PRODUCT / 地毯产品 ESCARPMENT COLOUR / 颜色 SPINIFEX DIRT INSTALLED / 安装 ASHLAR 上下错拼 LVT PRODUCT / LVT 产品
IRIDESCENCE COLOUR / 颜色 EARTH INSTALLED / 安装 ASHLAR 上下错拼

Specifications

Sandbank

Style Code	2528	产品型号	2528
Product Construction	Tapestry Tufted Patterned Structured Loop Pile	产品结构	簇绒高低圈绒
Yarn System	100% Recycled Solution Dyed Nylon	纱线系统	100% 回收原液染色纱线
Machine Gauge	1/10 th	簇绒机器规格	1/10 th
Pile Thickness	4.6 mm (± 0.5mm)	毯毛厚度	4.6 mm (± 0.5mm)
Total Thickness	9.3 mm (± 0.5mm)	总厚度	9.3 mm (± 0.5mm)
Tile Size	25 x 100 cm	地毯尺寸	25 x 100 cm
Area of Use	Commercial - Heavy Use	建议使用区域	商用 – 人流密集区域
Lifetime Antimicrobial	Intersept®	抗菌类型	Intersept®
Soil / Stain Protection	Protekt®	抗污类型	Protekt®
Installation Methods	Ashlar	安装方式	上下错拼



Shallows

Style Code	2527	产品型号	2527
Product Construction	Tapestry Tufted Patterned Structured Loop Pile	产品结构	簇绒高低圈绒
Yarn System	100% Recycled Solution Dyed Nylon	纱线系统	100% 回收原液染色纱线
Machine Gauge	1/10 th	簇绒机器规格	1/10 th
Pile Thickness	4.1 mm (± 0.5mm)	毯毛厚度	4.1 mm (± 0.5mm)
Total Thickness	8.9 mm (± 0.5mm)	总厚度	8.9 mm (± 0.5mm)
Tile Size	25 x 100 cm	地毯尺寸	25 x 100 cm
Area of Use	Commercial - Heavy Use	建议使用区域	商用 – 人流密集区域
Lifetime Antimicrobial	Intersept®	抗菌类型	Intersept®
Soil / Stain Protection	Protekt®	抗污类型	Protekt®
Installation Methods	Ashlar	安装方式	上下错拼



Undulating Water

Style Code	2526	产品型号	2526
Product Construction	Tapestry Tufted Patterned Structured Loop Pile	产品结构	簇绒高低圈绒
Yarn System	100% Recycled Solution Dyed Nylon	纱线系统	100% 回收原液染色纱线
Machine Gauge	1/10 th	簇绒机器规格	1/10 th
Pile Thickness	4.4 mm (± 0.5mm)	毯毛厚度	4.4 mm (± 0.5mm)
Total Thickness	9.3 mm (± 0.5mm)	总厚度	9.3 mm (± 0.5mm)
Tile Size	25 x 100 cm	地毯尺寸	25 x 100 cm
Area of Use	Commercial - Heavy Use	建议使用区域	商用 – 人流密集区域
Lifetime Antimicrobial	Intersept®	抗菌类型	Intersept®
Soil / Stain Protection	Protekt®	抗污类型	Protekt®
Installation Methods	Ashlar	安装方式	上下错拼



Specifications

Escarpment

Style Code	2525	产品型号	2525
Product Construction	Tufted Patterned Structured Loop Pile	产品结构	簇绒高低圈绒
Yarn System	100% Recycled Solution Dyed Nylon	纱线系统	100% 回收原液染色纱线
Machine Gauge	1/10 th	簇绒机器规格	1/10 th
Pile Thickness	3.6 mm (± 0.5mm)	毯毛厚度	3.6 mm (± 0.5mm)
Total Thickness	7.4 mm (± 0.5mm)	总厚度	7.4 mm (± 0.5mm)
Tile Size	50 x 50 cm	地毯尺寸	50 x 50 cm
Area of Use	Commercial - Heavy Use	建议使用区域	商用 – 人流密集区域
Lifetime Antimicrobial	Intersept®	抗菌类型	Intersept®
Soil / Stain Protection	Protekt®	抗污类型	Protekt®
Installation Methods	Ashlar	安装方式	上下错拼



Dry Bark

Style Code	2529	产品型号	2529
Product Construction	Tufted Patterned Structured Loop Pile	产品结构	簇绒高低圈绒
Yarn System	100% Recycled Solution Dyed Nylon	纱线系统	100% 回收原液染色纱线
Machine Gauge	1/10 th	簇绒机器规格	1/10 th
Pile Thickness	4.3 mm (± 0.5mm)	毯毛厚度	4.3 mm (± 0.5mm)
Total Thickness	7.4 mm (± 0.5mm)	总厚度	7.4 mm (± 0.5mm)
Tile Size	25 x 100 cm	地毯尺寸	25 x 100 cm
Area of Use	Commercial - Heavy Use	建议使用区域	商用 – 人流密集区域
Lifetime Antimicrobial	Intersept®	抗菌类型	Intersept®
Soil / Stain Protection	Protekt®	抗污类型	Protekt®
Installation Methods	Ashlar	安装方式	上下错拼



All Interface manufacturing facilities in the Asia Pacific region maintain registration to ISO 9001 Quality Management Systems and ISO 14001 Environmental Management Systems.

英特飞在亚太地区的所有生产设施都经过 ISO 9001 质量管理体系和 ISO 14001 环境管理体系的认证。

Production specifications are subject to normal manufacturing tolerances and may be changed without notice. Slight variation in colour among different production lots are normal and should be considered in the overall installation plan. Products covered by manufacturer's written warranty only. All other warranties, including without limitation any implied warranties of merchantability or fitness for particular purpose, are hereby disclaimed. Contact your representative for written warranty information.

产品规格会受到实际生产公差的影响，且可能会随时更新，恕不另行通知。不同生产批次间的少许色差实属正常，整体安装规划应将其考虑在内。产品质保以生产商提供的书面质保文件为准。对于所有其他保证，包括但不限于对特定用途的适销性或适用性的任何暗示性担保，本公司概不负责。敬请联系您的销售代表，获得书面质保文件。



碳中和地材项目





Carbon Neutral Floors™

India印度

英特飞印度/Interface India
tel: +91 80 4613 1313

South East Asia 东南亚

英特飞亚洲/Interface Asia
tel: +65 6478 1510

South Korea 韩国

英特飞韩国/Interface South Korea
tel: +82 2 555 1734

Japan 日本

英特飞日本/Interface Japan
tel: +81 3 5733 5211

北京/Beijing

英特飞中国/Interface China
tel: +86 10 6590 7810

香港/Hong Kong

英特飞中国/Interface China
tel: +852 2802 0838

上海/Shanghai

英特飞中国/Interface China
tel: +86 21 6340 3868

06/2023



气候变化无可争辩。但我们可以扭转这种局面。我们的任务是落实行动。加入#气候回归计划，助力营造宜居气候。

Climate change is undeniable. And reversible. Our mission is to prove it. **Join the #ClimateTakeBack and help create a climate fit for life.**